



## *Pricing Transparency*

*Our goal is to ensure transparency  
and help you make informed decisions  
that honour your loved one while  
respecting your budget.*





**Nielsen Funerals are proud to be your local funeral director and the most trusted funeral director of local families.**

In your time of need we offer a personal, caring and dignified service.

Our friendly and professional team can assist you with your every need in preparing a fitting tribute to your loved one, whatever your wishes or requirements.

Our long and proud history of caring for our community dates back over 130 years and over this time we have built a reputation of providing the highest level of funeral care due to our personal approach and high attention to detail.

Our dedicated team are all local people involved with local community groups.

We know the local area and all of the Churches, Cemeteries and funeral venues and therefore are able to offer you every option available.

We adhere to a strict code of ethics ensuring exceptionally high quality of facilities and staff to provide the highest standard of funeral service

### **Funeral expenses and payment terms**

A preliminary invoice will be issued after the funeral arrangement meeting. This invoice will include all of the costs that can be determined at that time.

The preliminary invoice must be paid two business days prior to the date of the funeral. As there are some charges that are not known at the time of the arrangements, a final invoice will be issued within seven days after the funeral service. This final invoice must be paid within seven days of the issue date.

As it is not possible to anticipate or estimate the individual requests and requirements of all families, there may be instances where it is appropriate for fees not specifically listed in this brochure to be charged.

All prices listed are GST inclusive.

Third party fees can be subject to change.

If you would like a more accurate estimate of cost or to speak with one of our caring and dedicated staff, please contact our office via phone on (03) 5623 2771 or by email at [admin@nielsenfunerals.com.au](mailto:admin@nielsenfunerals.com.au)



# Professional Service Fee

---

*The Nielsen Funerals Professional Service Fee includes the following:*

---

## *Professional Fees*

24 hours phone availability for initial and urgent calls.

Our staff, their expertise and guidance.

A funeral arrangement meeting with one of our funeral directors.

Your funeral arranger and our administration teams making all arrangements in accordance with the family's wishes, liaising with third-parties; such as florist, celebrant/clergy, venues, and catering staff as well as doctors, nursing homes/hospitals where applicable.

The registration with Births, Death and Marriages and application for the death certificate on behalf of the family.

All funeral administration including acquiring chosen music and copyright licence.

Official notification to Centrelink, Medicare and Veterans' Affairs when applicable.

Preparation and placement of newspaper notices in local and national newspapers of choice.

The preparation of high quality service booklets or keepsake cards.

Operating costs as well as necessary business overheads.

---

## *Care of your loved one*

The dignified transfer of your loved into our care by our dedicated team with the utmost respect using specialised vehicles built for this purpose.

The use of our accredited mortuary facilities and highly-trained and experienced mortuary staff caring for your loved one ensuring respectful and dignified care at all times.

When required, a one hour private viewing during normal hours is included.

---

## *Service Fees*

A Funeral Ceremony conducted in accordance with the family's wishes.

A hearse and operational vehicles, all necessary staff (usually at least 4-5 staff) supplied to conduct the funeral service, including one of our trained audio/visual specialists.

The use of our Chapel facilities for the ceremony and/or viewings if required.

The setting out of grass matting, lowering device, up to three canopies, 40 chairs, P.A. system at the cemetery for any type of burial service (where possible and practical).

The setup of photos, items and the looped photo tribute at the local wake where possible.

---

## **All Funeral Services include:**

A complimentary Photo Tribute Slideshow (up to 80 photos set to two pieces of music).

A complimentary personalised Photo Memorial Book in a keepsake box.

Complimentary recording and live-streaming of services held at the Nielsen Funeral Chapel.

Memorial page with notices placed on the Nielsen Funerals website at no cost.

## *Nielsen Funerals Professional Service Fees for a Funeral Ceremony held at*

### **The Nielsen Funeral Chapel**

followed by an unattended cremation or burial	\$4950
followed by a committal service at the cemetery or crematorium	\$5500

---

### **Graveside Funeral Service**

\$4950

---

### **A local Church or external venue**

followed by an unattended cremation or burial	\$5350
followed by a committal service at the cemetery or crematorium	\$5750

---

### **Gippsland Memorial Park, Springvale Botanical Cemetery or Bunurong Memorial Park**

followed by an unattended cremation or burial	\$5450
followed by a committal service at the cemetery or crematorium	\$5850

---

## *Additional costs which may effect the Professional Service Fee*

Extended funeral service \$250

*Where additional time is required for refreshments to be held prior to a committal service (price is based on 60 minutes for refreshments), if the committal is held on a separate day, or where a much longer service is required.*

Extensive funeral service setup \$385

*Where significant additional time is required for the set up of funeral service (for example the setup of a funeral service held in a Public Hall where Nielsen Funerals are required to setup all of the chairs and venue requirements).*

Travel costs POA

*Where a funeral service is held far from our local area. This fee is to cover the costs of staffing and travel.*

Funeral Service held on a Saturday or Public Holiday from \$990

*To cover the additional costs of staffing. Exact cost will be dependant on service requirements.*

Funeral arrangement meeting held at the family home \$100

*To cover the cover the costs of travel and extra time required (Price is based on travel up to 30km from Warragul/Drouin).*

After hours funeral arrangement \$275

*If the initial funeral arrangement meeting is held on a weekend, after hours or on a public holiday.*

After Hours Rosary at the Church \$495

*There is no additional charge for a Rosary held immediately prior to the Funeral Mass.*

---

*The Professional Service Fee may also be subject to increase where very significant extra time is required to make arrangements, such as mediating between family members.*



## *Transfer from place of passing into our care*

Local transfer during normal hours included in our Professional Service Fee  
*(Normal hours are 8.30am-5pm Monday to Friday, excluding public holidays.)*

Local After Hours Transfer	\$385
Transfer from Melbourne or outside local area	from \$330
After hours transfer from Melbourne or outside local area	\$440
Interstate and long distance transfers	Price on application

---



## *Mortuary Care*

Professional mortuary care is included in the Professional Service Fee

Full embalming (when requested or required)	\$550
Restorative procedures <i>(When restoration procedures are required beyond our standard care).</i>	\$550
Appointment for family to assist with dressing	\$165
Clothing provided by family	No charge
Shroud or garments supplied by Nielsen Funerals	\$110

---

## *Viewings*

Viewing <i>A viewing, for one hour during normal business hours, is included in our Professional Service Fee.</i>	No extra charge
Additional Viewing during normal hours (1 hour)	\$55
After Hours Viewing - After 5pm Weekdays (1 hour) <i>Viewing held outside the hours of 9am-5pm Monday to Friday, excluding public holidays.</i>	\$220
After Hours Viewing - Weekend or Public Holiday (1 hour)	\$330

---



## *Death Certificates from the Victorian Registry of Births, Deaths and Marriages*

Death Certificate package (two official death certificates)	\$110
Standard Death Certificate	\$80
Death Certificates from other states	Price on application



### Someone to lead the funeral ceremony

Standard Funeral Celebrant Fee	\$825
Minister of Religion / Standard Clergy Offering	\$450
<i>This may vary and sometimes will not apply for a member of the church.</i>	
Family or friend to conduct the service entirely	No cost
<i>This would involve the family member or friend leading the entire ceremony.</i>	



### Church Hire Fees

Church Hire Offering	Varies
<i>Some churches charge a hire fee, some do not. Average church hire fees are around \$250 but may not apply for church members.</i>	
Organist	from \$110



### The Nielsen Funeral Chapel

Use of the Nielsen Funeral Chapel for the Ceremony	No charge
If additional seating is required	\$250
<i>Extra seating brought into the Foyer and Function Room spaces of the Chapel to accommodate very large funeral services with up to 380 seats in total.</i>	
The Nielsen Funeral Chapel Function Room	\$220
<i>Fee for use of our Chapel Function Room. Additional costs apply for use after 5pm or on a weekend or public holiday.</i>	



## *Venue Hire Fees*

External Venue Hire Fee	Varies
-------------------------	--------

### *Some examples of Venue Hire Fees:*

Gulwarra Heights Memorial Park Chapel or Function Room	\$300
Gulwarra Heights Memorial Park Chapel and Function Room	\$410
Lardner Park Events Centre (incl. audio/visual and setup)	\$6600
The Rose Chapel Hire at Gippsland Memorial Park	\$370
Chapel Hire at Springvale or Bunurong Memorial Park <i>When hired in conjunction with a cremation.</i>	\$210-470
Chapel Hire at Springvale or Bunurong Memorial Park <i>When hired in conjunction with a burial.</i>	\$450-745

---

## *Cremation Fees*

Gippsland Crematorium, Traralgon	\$980
Springvale or Bunurong Crematorium	\$1230
Cremation Permit (not required for Coroners cases)	\$80

## *Cremation Urns*

Standard plastic cremation urn	Included
Cremation Urn options	Varies

[Click here to view our selection of Cremation Urns and pricing](#)





## Cemetery Fees

The Cemetery Fee can vary greatly depending on the chosen cemetery, the grave style and location and whether or not there is an existing or reserved grave. Please speak to us for more information on cemetery costs.

Nielsen Funerals will supply a temporary gravemarker on the grave after the burial.

### *Examples of Cemetery Fees:*

#### **Drouin Cemetery**

New lawn grave	\$3110	Reopen lawn grave	\$2085
----------------	--------	-------------------	--------

#### **Warragul (Victoria Street) Cemetery**

New lawn grave	\$3750	Reopen lawn grave	\$1720
----------------	--------	-------------------	--------

#### **Gulwarra Heights Memorial Park, Warragul**

New lawn grave	\$3185	Reopen lawn grave	\$1720
----------------	--------	-------------------	--------

#### **Drouin West Cemetery**

New lawn grave	\$2332	Reopen lawn grave	\$1537
----------------	--------	-------------------	--------

#### **Bunyip Cemetery**

New lawn grave	\$3927	Reopen lawn grave	\$3072
----------------	--------	-------------------	--------

#### **Trafalgar Cemetery**

New lawn grave	\$2505	Reopen lawn grave	\$1515
----------------	--------	-------------------	--------

#### **Neerim Cemetery (including standard lawn grave plaque)**

New lawn grave	\$3007	Reopen lawn grave	\$2307
----------------	--------	-------------------	--------

#### **Yarragon Cemetery (including standard lawn grave plaque)**

New lawn grave	\$2935	Reopen lawn grave	\$2121
----------------	--------	-------------------	--------

#### **Poowong Cemetery**

New lawn grave	\$2869	Reopen lawn grave	\$2087
----------------	--------	-------------------	--------

#### **Willow Grove Cemetery**

New lawn grave	\$1670	Reopen lawn grave	\$1025
----------------	--------	-------------------	--------

#### **Yallourn Cemetery (including standard lawn grave plaque)**

New lawn grave	\$4474	Reopen lawn grave	\$2934
----------------	--------	-------------------	--------

#### **Moe Cemetery (including standard lawn grave plaque)**

New lawn grave	\$2924	Reopen lawn grave	\$2189
----------------	--------	-------------------	--------

#### **Pakenham Cemetery**

New lawn grave	\$4285	Reopen lawn grave	\$2315
----------------	--------	-------------------	--------

Unless otherwise stated, the cemetery fee does not include the cost of a plaque.

The plaque is usually invoiced by the cemetery trust once it has been approved and ordered.

The cost of the plaque will vary but the average cost of a standard plaque is around \$1000.



### *Newspaper notices (price is an estimate only based on an average sized notice)*

Notices placed on the Nielsen Funerals website	No charge
Death and Funeral notice in The Warragul/Drouin Gazette	\$90
Death and Funeral notice in The Latrobe Valley Express	\$220
Death and Funeral notice in The Pakenham Gazette	\$220
Death and Funeral notice in The Sentinel Times	\$150
Death notice in the Herald Sun	\$400
Funeral notice in the Herald Sun	\$400
Death with Funeral notice in The Age	\$450
Other newspapers of choice	Price on application

---



### *Flowers*

Flat hand tied sheaf	from	\$150
Small casket sheath	from	\$250
Standard casket sheath	from	\$395
Flower bowl arrangement	from	\$200
Individual roses		\$6 each
Individual carnations		\$3 each
Casting petals, gum leaves, hay sprigs or rosemary sprigs		No charge

---



### *Funeral Vehicles*

The hearse is included in our Professional Service Fee

Mourning coach and driver (space for 4 passengers)	\$385
--	-------

*The mourning coach would collect the family from a local home and drive the family to the funeral service, to the cemetery or crematorium if required and then back to the wake or home.*

*Price is based on up to three hours, additional costs would apply if the car and driver were required for a longer duration.*

Limousine, Horse Drawn Hearse or Harley Hearse Hire	Price on application
---	----------------------

## Catering

Catering menu at the Nielsen Funeral Chapel \$16 per person  
*A large assortment of hot finger food, sandwiches, cakes and slices, tea, coffee and juice*

[Click here to view our Chapel catering menu and pricing](#)

Catering at external venues varies Prices on application

## Framed photographs

Photo in a 10x8 sized frame from our selection \$33

Photo in a 11x14 sized frame from our selection \$44

Other custom sized frames are available Prices on application

## Service booklets and printed keepsakes

A6 sized double sided keepsake cards \$1 each

A6 sized four page service booklets \$1.50 each

Bookmark keepsakes laminated \$2 each

A5 sized four page service booklet (full colour) \$2.70 each

Black and white four page insert stapled into booklet \$0.70 per insert \*

Holy Cards and Santini Cards (double sided) \$1.10 each

Holy Cards and Santini Cards (four page) \$1.50 each

A6 thank you cards with envelopes \$33 setup + \$1.60 each

\* A setup fee of \$55 applies to the creation of a booklet where insert(s) are required.



## Photo Tribute Slideshow

A standard Photo Tribute is included complimentary.

*A standard Photo Tribute is made up of up to 80 photos set to two pieces of music.*

Extended Photo Tribute for the service \$110

*An extended Photo Tribute is made up of up to 120 photos set to three pieces of music.*

Extended Photo Tribute for the wake \$165

*An extended Photo Tribute with up to 100 extra photos added and set up as a continuous loop.*

A Funeral USB is supplied to the family as a complimentary keepsake

*This contains a copy of the photo tribute, the funeral service recording (if applicable), digital copies of the photos used in the photo tribute, the funeral music, a digital copy of the service booklet or keepsake, copies of the newspaper notices, messages received via our website and any other digital files relating to the funeral service.*

Additional Funeral USB in a keepsake box \$22



## Custom Photo Memorial Books

A custom Photo Memorial Book and keepsake box is included complimentary

Additional Photo Memorial Book \$55

Additional Photo Memorial Book keepsake box \$20

Memorial book own custom cover design fee (optional) \$110





### *Live-streaming and recording*

Live-streaming and/or recording of services held at the Nielsen Funeral Chapel is included complimentary

Live-streaming and/or recording of external services from \$715

Live-streaming and/or recording of committal services from \$220

---

### *Additional audio/visual requirements*

Professional P.A. system hire \$330

External TV screen to outside or overflow area \$165

*A visual feed for overflow must be in conjunction with a funeral service live-stream or recording*

TV screen or projector setup at the local wake \$165

*If the catering venue does not have their own facilities, cost includes setup and pack up.*

---

### *Some other options*

Mounted crucifix / cross on a timber stand with nameplate \$145

White dove release from \$275

Scottish Piper from \$330

Professional Pianist and Singer \$770

Aquamation (Water Cremation) Fee \$6000

*Price includes transport to the Aquamation Centre located in New South Wales.*

---

### Disclosures

Our mortuary care facility is locally owned and operated by Nielsen Funerals and is located at 2 Korumburra-Warragul Road, Warragul.

Transportation of the deceased to the burial or cremation will be in a hearse or suitable vehicle owned by our company, custom built for this purpose.

The deceased will be kept in our mortuary care facility and will only be transported for the purposes of the funeral ceremony.

Our closest crematorium is the Gippsland Memorial Park operated by the Traralgon Cemetery Trust but Nielsen Funerals are able to use any other crematorium requested.

## Coffin or Casket Selection

No service essential raw particleboard or cardboard coffin	\$660
Laminated particle board coffins	from \$1100
Personalised (wrapped) particle board coffins own design	\$3150
Timber veneer MDF board coffins	from \$2500
Solid timber coffins	from \$2750
Solid timber caskets	from \$3300
Environmentally friendly coffin and caskets	from \$1650
Custom (larger sized) coffin and casket surcharge	from \$180
Own coffin handling fee	\$550

*For legalisation of nameplate. Indemnity must be signed.*



## The difference between a coffin and a casket

### COFFIN

A coffin is tapered at the shoulder and has a removable lid.



### CASKET

A casket is rectangular in shape and has a hinged lid.



# SOLID TIMBER COFFINS



## COLONIAL

- Solid Plantation Pine
- Single raised lid with rounded edges
- Walnut or Deep Rosewood colour gloss finish
- 6 silver metal wood bar handles

\$ 2,750.00 (inc. GST)



## DENMAN CEDAR

- Solid Cedar routed sides
- Solid Cedar domed top
- Cedar colour low sheen finish
- 6 gold metal wood bar handles

\$ 3,450.00 (inc. GST)



## BLACKWOOD

- Solid Tasmanian Blackwood
- Solid Blackwood single raised lid
- Natural Blackwood timber finish
- 6 bronze metal wood bar handles

\$ 3,850.00 (inc. GST)



## OAKFORD

- Solid Oak
- Solid Oak double raised lid
- Natural Oak timber finish
- 6 silver metal wood bar handles

\$ 4,250.00 (inc. GST)

# PARTICLE BOARD COFFINS



## BRAID

- Laminated particle board
- Flat lid
- Maple colour unpolished matte finish
- 6 silver coloured plastic handles

\$ 1,100.00 (Inc. GST)



## COUNTRY OAK

- Laminated particle board
- Flat lid
- Oak grain print gloss finish
- 6 silver coloured plastic handles

\$ 1,495.00 (Inc. GST)



## WAVERLEY

- Laminated particle board
- Single raised lid
- Rosewood colour gloss finish
- 6 silver coloured plastic handles

\$ 1,795.00 (Inc. GST) \*

# MDF BOARD TIMBER VENEER COFFINS



## NORWOOD

- Timber veneer over custom wood
- Single raised lid
- Walnut colour glass finish
- 6 gold metal wood bar handles

\$ 2,500.00 (Inc. GST) \*



## SWAN

- Timber veneer over custom wood
- Single raised Lid
- White gloss finish (available in any other colour)
- 6 silver or gold metal wood bar handles

\$ 2,500.00 (Inc. GST)



## GOLDEN TEAK

- Timber veneer over custom wood
- Domed lid
- Teak colour gloss finish with gold line
- 6 gold plastic wood bar handles

\$ 2,650.00 (Inc. GST)



## HAMPTON

- Timber veneer over custom wood
- Satin finish
- Light walnut natural satin finish
- 6 bronze metal swing handles

\$ 2,750.00 (Inc. GST) \*



## DAVIDSON

- Timber veneer over particle board sides
- Solid timber domed lid
- Rosewood colour gloss finish
- 6 silver metal wood bar handles

\$ 2,985.00 (Inc. GST) \*

# SOLID TIMBER CASKETS



## DEVON

- Solid Plantation Pine
- Full couch spacious casket
- Walnut colour gloss finish
- 6 silver metal wood bar handles

\$ 3,300.00 (inc. GST)



## GRECIAN URN ROSEWOOD

- Solid Plantation Pine
- Specially crafted octagonal shaped casket
- Rosewood or Walnut colour gloss finish
- 6 silver metal wood bar handles

\$ 3,500.00 (inc. GST)



## GRECIAN URN PEARL

- Solid Plantation Pine
- Specially crafted octagonal shaped casket
- White Pearl colour gloss finish
- 6 silver or gold metal wood bar handles

\$ 3,650.00 (inc. GST)



## GRECIAN URN BLACKWOOD

- Solid Tasmanian Blackwood
- Specially crafted octagonal shaped casket
- Natural Blackwood timber low sheen finish
- 6 bronze metal wood bar handles

\$ 4,550.00 (inc. GST)



## REGAL HALF COUCH •

- Solid Cedar
- Half couch casket
- Cedar colour gloss finish
- 6 silver metal bar handles

\$ 4,950.00 (inc. GST)



## FREDERICK DOME •

- Solid Poplar American made casket
- Half couch domed lid with nugget two tone gloss finish with ivory basket weave interior
- Extension bar handles on sides and ends

\$ 7,350.00 (inc. GST)

# ENVIRONMENTALLY FRIENDLY COFFINS



## ENVIRO (PLANTATION PINE)

- Solid plantation pine
- Unstained
- Wooden handles
- Unbleached calico lining

\$ 1,900.00 (Inc. GST)



## WILLOW (WICKER) •

- 100% basketry Willow
- Hand woven
- Rope handles
- Curved end Willow coffin

\$ 1,650.00 (Inc. GST)



## NATURAL LEGACY (WOOL) •

- Pure wool outer layer
- Strong recycled cardboard frame
- Generously lined with cotton
- Woollen mattress and cotton pillow

\$ 2,500.00 (Inc. GST)



# General Pricing and Package Examples

## *'Essential Care' unattended cremation*

*A cremation without any kind of funeral ceremony.*

Professional Service Fee and simplistic coffin	\$2225
A Viewing at our Chapel (if required)	No charge
Cremation Fee With no family attendance at the Gippsland Crematorium, Traralgon	\$980
Cremation Permit (Not required for someone referred to the Coroner)	\$80
Notice on the Nielsen Funerals website (if required) Notices placed in newspapers vary in cost.	No charge
Death Certificates Package which includes two legal death certificates	\$110
<b>TOTAL</b> (Incl. GST)	<b>\$3395</b>

Please note that this option does not include any kind of funeral ceremony or gathering other than a viewing.

Additional costs will apply if a gathering or ceremony is incorporated or for any variations that may be requested and conducted.

*Funeral Service held at the Nielsen Funeral Chapel  
followed by an unattended cremation.*

Professional Service Fee	\$4950
Coffin starting at <i>The first coffin in our wide selection</i>	\$1100
Funeral Celebrant <i>This can be changed to \$450 if a minister is preferred or can be deducted if a family member or friend wish to lead the Service</i>	\$825
Nielsen Funeral Chapel <i>Includes complimentary live-stream and/or recording if required</i>	No charge
Cremation Fee <i>With no family attendanace at the Gippsland Crematorium, Traralgon</i>	\$980
Cremation Permit <i>(Not required for someone referred to the Coroner)</i>	\$80
Notices placed on the Nielsen Funerals website <i>Notices placed in newspapers vary in cost.</i>	No charge
Standard Casket Flowers <i>Varies depending on size and flowers requested</i>	\$395
Photo Tribute Slideshow <i>Up to 80 photos set to two pieces of music</i>	No charge
Photo Memorial Book <i>Personalised Photo book with the names of those who attend</i>	No charge
Death Certificates <i>Package which includes two legal death certificates</i>	\$110
<b>TOTAL (Incl. GST)</b>	<b>\$8440</b>

*Funeral Service held at the Nielsen Funeral Chapel  
followed by a committal service at the crematorium.*

Professional Service Fee	\$5500
Coffin starting at <i>The first coffin in our wide selection</i>	\$1100
Funeral Celebrant <i>This can be changed to \$450 if a minister is preferred or can be deducted if a family member of friend wish to lead the Service</i>	\$825
Church Hire Fee <i>Some Churches charge a hire fee and some do not</i>	Varies
Cremation Fee & Crematorium Chapel Hire <i>Gippsland Crematorium, Traralgon</i>	\$1260
Cremation Permit <i>(Not required for someone referred to the Coroner)</i>	\$80
Notices placed on the Nielsen Funerals website <i>Notices placed in newspapers vary in cost.</i>	No charge
Standard Casket Flowers <i>Varies depending on size and flowers requested</i>	\$395
Photo Tribute Slideshow <i>Up to 80 photos set to two pieces of music</i>	No charge
Photo Memorial Book <i>Personalised Photo book with signatures of those who attend</i>	No charge
Death Certificates <i>Package which includes two legal death certificates</i>	\$110
<b>TOTAL (Incl. GST)</b>	<b>\$9360</b>

*Memorial Service held at the Nielsen Funeral Chapel  
(Unattended cremation held prior to the Service)*

Professional Service Fee	\$4950
Simplistic coffin <i>Not present at the Service</i>	\$660
Funeral Celebrant <i>This can be changed to \$450 if a minister is preferred or can be deducted if a family member or friend wish to lead the Service</i>	\$825
Nielsen Funeral Chapel <i>Includes complimentary live-stream and/or recording if required</i>	No charge
Cremation Fee <i>With no family attendanace at the Gippsland Crematorium, Traralgon</i>	\$980
Cremation Permit <i>(Not required for someone referred to the Coroner)</i>	\$80
Notices placed on the Nielsen Funerals website <i>Notices placed in newspapers vary in cost.</i>	No charge
Flower Bowl Arrangement	\$200
Photo Tribute Slideshow <i>Up to 80 photos set to two pieces of music</i>	No charge
Photo Memorial Book <i>Personalised Photo book with the names of those who attend</i>	No charge
Death Certificates <i>Package which includes two legal death certificates</i>	\$110
<b>TOTAL (Incl. GST)</b>	<b>\$7805</b>

## *Memorial Service held at a Church or external venue (Unattended cremation held prior to the Service)*

Professional Service Fee	\$5350
Simplistic coffin <i>Not present at the Service</i>	\$660
Clergy Offering <i>If the service is to be held at an external venue and a celebrant is preferred a fee of \$375 would need to be added or can be deducted if a family member or friend wish to lead the Service</i>	\$450
Church Hire Fee <i>Some Churches charge a hire fee and some do not</i>	Varies
Cremation Fee <i>With no family attendance at the Gippsland Crematorium, Traralgon</i>	\$980
Cremation Permit <i>(Not required for someone referred to the Coroner)</i>	\$80
Notices placed on the Nielsen Funerals website <i>Notices placed in newspapers vary in cost.</i>	No charge
Flower Bowl Arrangement	\$200
Photo Tribute Slideshow <i>Up to 80 photos set to two pieces of music</i>	No charge
Photo Memorial Book <i>Personalised Photo book with the names of those who attend</i>	No charge
Death Certificates <i>Package which includes two legal death certificates</i>	\$110
<b>TOTAL (Incl. GST)</b>	<b>\$7830</b>

*Funeral Service held at a local Church or external venue followed by an unattended cremation.*

Professional Service Fee	\$5350
Coffin starting at <i>The first coffin in our wide selection</i>	\$1100
Clergy Offering <i>If the service is to be held at an external venue and a celebrant is preferred a fee of \$375 would need to be added or can be deducted if a family member or friend wish to lead the Service</i>	\$450
Church Hire Fee <i>Some Churches charge a hire fee and some do not</i>	Varies
Cremation Fee <i>Gippsland Crematorium, Traralgon</i>	\$980
Cremation Permit <i>(Not required for someone referred to the Coroner)</i>	\$80
Notices placed on the Nielsen Funerals website <i>Notices placed in newspapers vary in cost.</i>	No charge
Standard Casket Flowers <i>Varies depending on size and flowers requested</i>	\$395
Photo Tribute Slideshow <i>Up to 80 photos set to two pieces of music</i>	No charge
Photo Memorial Book <i>Personalised Photo book with signatures of those who attend</i>	No charge
Death Certificates <i>Package which includes two legal death certificates</i>	\$110
<b>TOTAL (Incl. GST)</b>	<b>\$8465</b>

*Funeral Service held at a local Church or external venue followed by a committal service at the Crematorium.*

Professional Service Fee	\$5750
Coffin starting at <i>The first coffin in our wide selection</i>	\$1100
Clergy Offering <i>If the service is to be held at an external venue and a celebrant is preferred a fee of \$375 would need to be added or can be deducted if a family member or friend wish to lead the Service</i>	\$450
Church Hire Fee <i>Some Churches charge a hire fee and some do not</i>	Varies
Cremation Fee & Crematorium Chapel Hire <i>Gippsland Crematorium, Traralgon</i>	\$1260
Cremation Permit <i>(Not required for someone referred to the Coroner)</i>	\$80
Notices placed on the Nielsen Funerals website <i>Notices placed in newspapers vary in cost.</i>	No charge
Standard Casket Flowers <i>Varies depending on size and flowers requested</i>	\$395
Photo Tribute Slideshow <i>Up to 80 photos set to two pieces of music</i>	No charge
Photo Memorial Book <i>Personalised Photo book with signatures of those who attend</i>	No charge
Death Certificates <i>Package which includes two legal death certificates</i>	\$110
<b>TOTAL (Incl. GST)</b>	<b>\$9235</b>



## Graveside Funeral Service

*The Funeral Service is held entirely at the Cemetery*

*(The weather forecast should be considered when choosing this option)*

Professional Service Fee	\$4950
<i>Includes up to 100 chairs setup at the graveside where possible</i>	
Coffin starting at	\$1100
<i>The first coffin in our wide selection</i>	
Funeral Celebrant	\$825
<i>This can be changed to \$450 if a minister is preferred or can be deducted if a family member or friend wish to lead the Service</i>	
Cemetery Fee to be added	
<i>Cost varies depending on the cemetery and grave type</i>	
Temporary Grave Marker	No charge
<i>A timber marker with your loved ones name and photo to mark the location of the grave until the plaque or headstone has been installed.</i>	
Notices placed on the Nielsen Funerals website	No charge
<i>Notices placed in newspapers vary in cost.</i>	
Standard Casket Flowers	\$395
<i>Varies depending on size and flowers requested</i>	
Photo Tribute Slideshow	No charge
<i>To be played at the wake, gernerally up to 80 photos if required</i>	
Photo Memorial Book	No charge
<i>Personalised Photo book with signatures of those who attend</i>	
Death Certificates	\$110
<i>Package which includes two legal death certificates</i>	
<b>TOTAL (Incl. GST)</b>	<b>\$7380</b>
	<i>Plus Cemetery costs</i>

*Funeral Service held at the Nielsen Funeral Chapel  
followed by a committal service at the graveside.*

Professional Service Fee	\$5500
Coffin starting at <i>The first coffin in our wide selection</i>	\$1100
Funeral Celebrant <i>This can be changed to \$450 if a minister is preferred or can be deducted if a family member or friend wish to lead the Service</i>	\$825
Nielsen Funeral Chapel <i>Includes complimentary live-stream and/or recording</i>	No charge
Cemetery Fee to be added <i>Cost varies depending on the cemetery and grave type</i>	
Temporary Grave Marker <i>A timber marker with your loved ones name and photo to mark the location of the grave until the plaque or headstone has been installed.</i>	No charge
Notices placed on the Nielsen Funerals website <i>Notices placed in newspapers vary in cost.</i>	No charge
Standard Casket Flowers <i>Varies depending on size and flowers requested</i>	\$395
Photo Tribute Slideshow <i>Up to 80 photos set to two pieces of music</i>	No charge
Photo Memorial Book <i>Personalised Photo book with the names of those who attend</i>	No charge
Death Certificates <i>Package which includes two legal death certificates</i>	\$110
<b>TOTAL (Incl. GST)</b>	<b>\$7930</b> <i>Plus Cemetery costs</i>

*Funeral Service held at a local Church or external venue followed by a committal service at the graveside.*

Professional Service Fee	\$5750
Coffin starting at <i>The first coffin in our wide selection</i>	\$1100
Clergy Offering <i>If the service is to be held at an external venue and a celebrant is preferred a fee of \$375 would need to be added or can be deducted if a family member or friend wish to lead the Service</i>	\$450
Church Hire Fee <i>Some Churches charge a hire fee and some do not</i>	Varies
Cemetery Fee to be added <i>Cost varies depending on the cemetery and grave type</i>	
Temporary Grave Marker <i>A timber marker with your loved ones name and photo to mark the location of the grave until the plaque or headstone has been installed.</i>	No charge
Notices placed on the Nielsen Funerals website <i>Notices placed in newspapers vary in cost.</i>	No charge
Standard Casket Flowers <i>Varies depending on size and flowers requested</i>	\$395
Photo Tribute Slideshow <i>Up to 80 photos set to two pieces of music</i>	No charge
Photo Memorial Book <i>Personalised Photo book with signatures of those who attend</i>	No charge
Death Certificates <i>Package which includes two legal death certificates</i>	\$110
<b>TOTAL (Incl. GST)</b>	<b>\$7805</b>

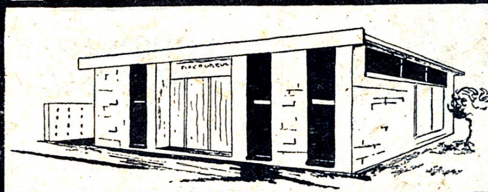




# NIELSEN & HANDLEY

Telephones

WARRAGUL 22771  
PAKENHAM EAST 127  
YARRAGON 161  
ALL HOURS



Office and Chapel

14 QUEEN STREET  
WARRAGUL  
PERSONAL SERVICE  
DAY and NIGHT

# FUNERAL DIRECTORS

Nielsen  
FUNERALS

